



# MONTHLY MEMBERSHIP PROGRESS REPORT

Results as of: 12/31/2015

Multiple District 14

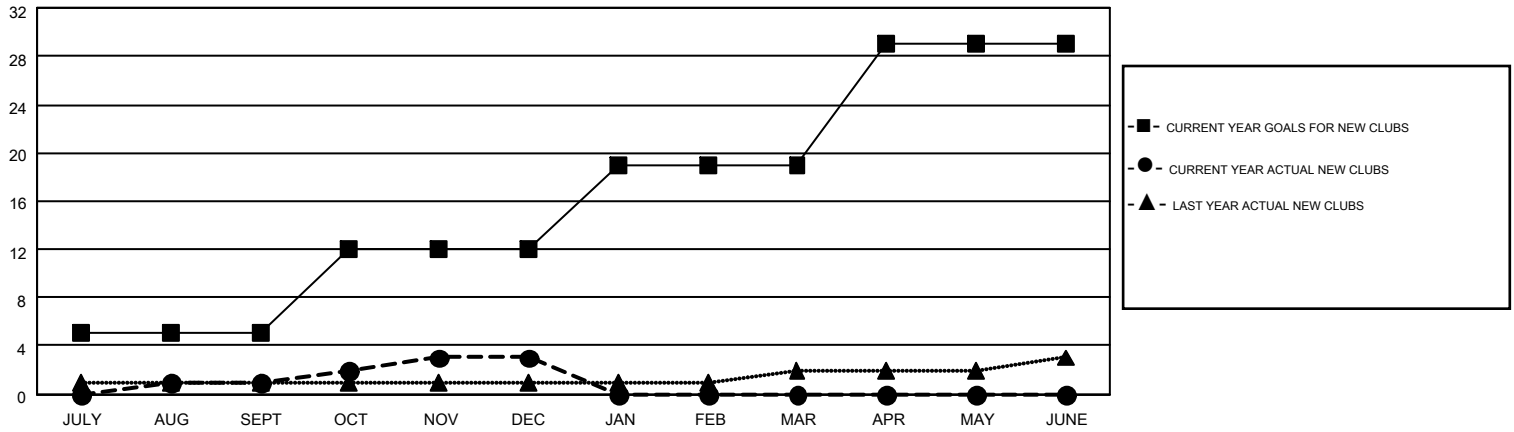
LOCATION: PENNSYLVANIA

GMT: CINDY GREGG

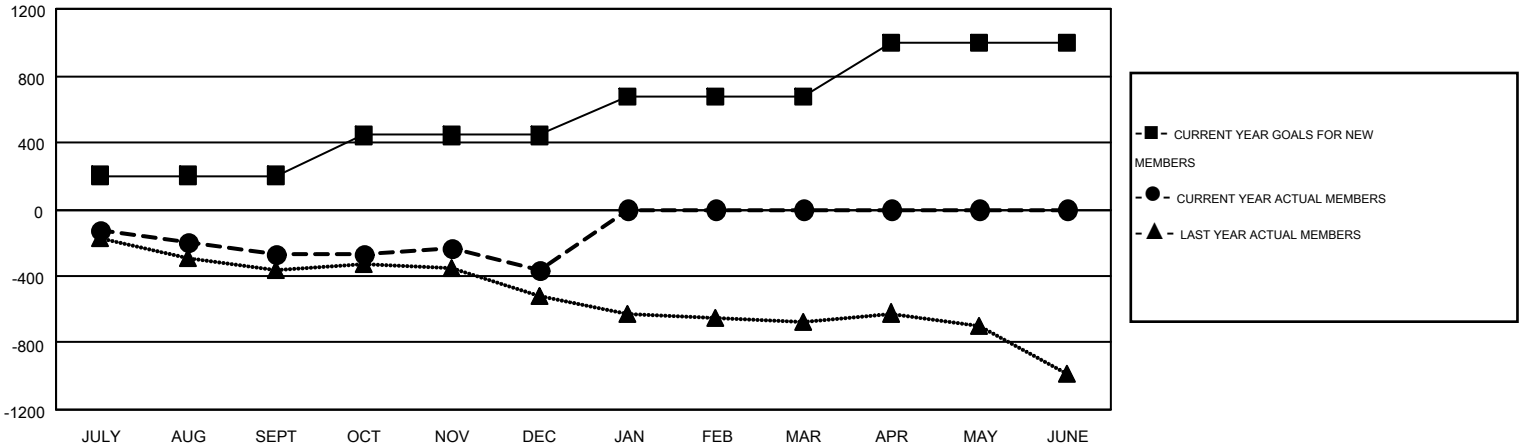
GMT CA 1

Clubs					Members				
RESULTS FOR 2015-2016					RESULTS FOR 2015-2016				
QUARTER	NEW CLUB GOAL	NEW CLUBS	DROPPED CLUBS	NET GAIN/LOSS	QUARTER	NEW MEMBER GOAL	CHARTER AND NEW MEMBERS ADDED	DROPPED MEMBERS	NET GAIN/LOSS
JULY/AUG/SEPT	5	1	8	-7	JULY/AUG/SEPT	203	308	580	-272
OCT/NOV/DEC	7	2	1	1	OCT/NOV/DEC	239	417	507	-90
JAN/FEB/MAR	7	0	0	0	JAN/FEB/MAR	237	0	0	0
APR/MAY/JUNE	10	0	0	0	APR/MAY/JUNE	319	0	0	0

GOALS AND ACTUAL NEW CLUBS CUMULATIVE



GOALS AND ACTUAL MEMBERS CUMULATIVE



DROPPED CLUBS: 9	277 CLUBS OF 712 ADDED 1 OR MORE NEW MEMBERS	<u>GENDER DISTRIBUTION</u>	
<u>DROPPED MEMBERS</u>		MALE	15,148 (76.63%)
DECEASED	187	FEMALE	4,619 (23.37%)
CLUB CANCELLED	92	<a href="#">CLICK HERE FOR HEALTH ASSESSMENT DATA</a>	
OTHER	808	FAMILY UNIT MEMBERS	3,468
TOTAL	1,087	HEAD OF HOUSEHOLD	1,680
		NON-HEAD OF HOUSEHOLD	1,788